

Missing EDA Links

SMASH 6.0

DOLPHIN INTEGRATION

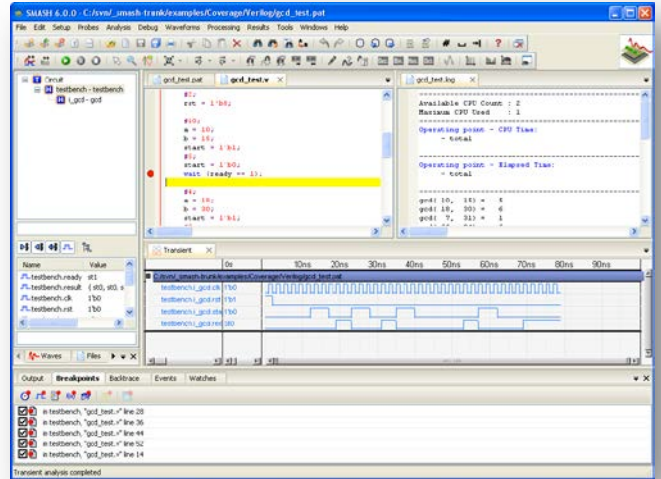
Efficient Waveform Viewer

Modern User Interface

SMASH 6.0 provides a brand-new and efficient waveform viewer, for analysis of mixed-signal simulation results, as well as a styled user interface enabling users to access and configure more easily the powerful analyses provided by the mixed-signal simulator SMASH.

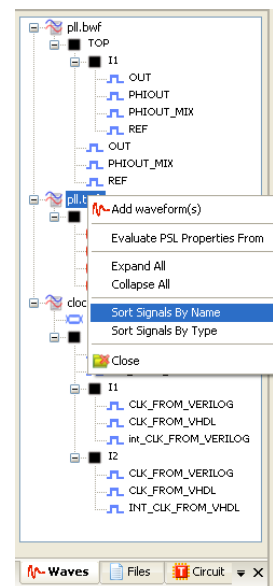
Key Enhancements of the Mixed-Signal Simulator SMASH 6.0

- Integrated powerful waveform viewer
- New generation of user interface
 - Natively cross-platform
 - Identical under Windows and Linux
- Reduction of the memory needed to load SPICE netlists with 28nm process parameter sets
- Integrated standard BSIM SOI compact model for Silicon-On-Insulator circuit design
- Enhanced Sweep analysis supporting both sweep with multiple parameters and multiple sweeps
- Enhanced CCS extraction for non-uniform curves

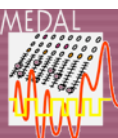


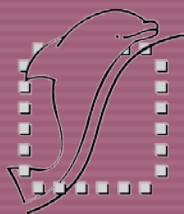
Key Features of the Integrated Development Environment

- Smooth navigation between simulator control file, netlist and design files, waveforms... using tabs
- Smart management of panels
 - Hide/Display through menu or shortcuts
 - Move and combine panels
- Organization of waveforms in multiple independent views, possibility to save view setups
- Enhanced FFT analysis configuration and flexibility
- Display of all or part of the output messages in one click
- Improved window for formula set up
- Signal and device filtering in the circuit hierarchy view
- Integrated HDL source code debugger
- Easy access to SPICE device model documentation



 SMASH is available identically under Linux and Windows





Missing EDA Links

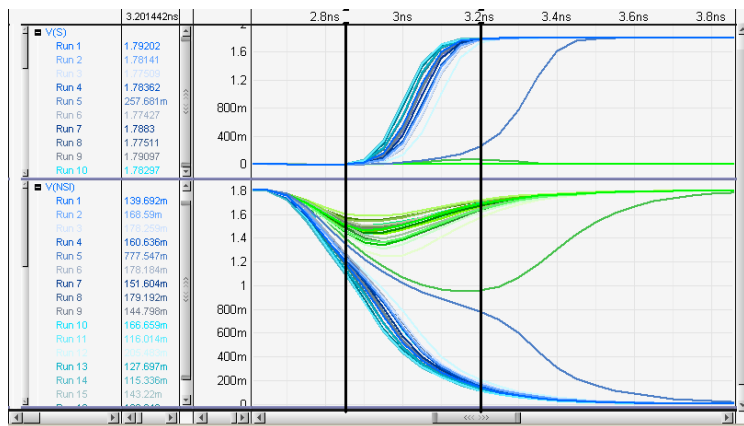
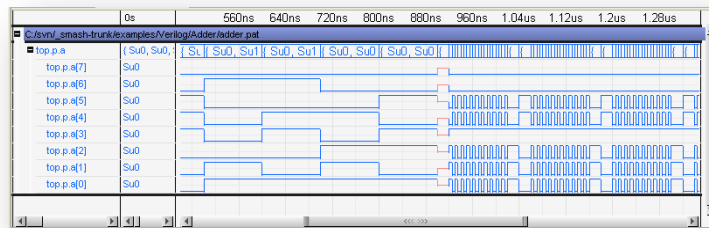
SMASH 6.0

DOLPHIN INTEGRATION

Powerful Waveform Viewer Swave

Easy Management of Waveforms

- Duplication, more explicit names, customization, use of aliases...
- Drag and drop of waveforms (inside a view, to another view)
- Creation of a hierarchy of waveform groups
- Capability to expand buses and multiple runs of Monte Carlo and Sweep analyses

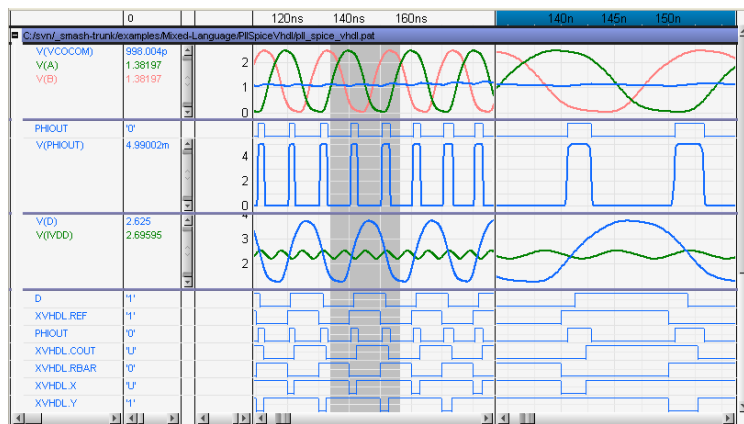
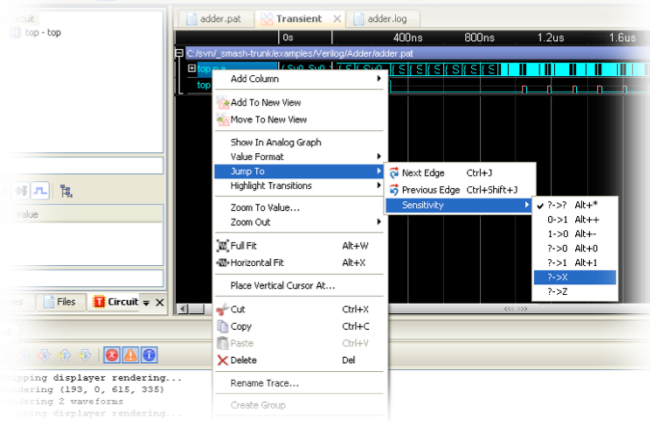


User-Friendly Interface

- Extended preferences management (colors, font, cursor size...)
- Resize graphs, scroll, zoom by resizing the scrollbar thumb, zoom to area (in & out)...
- Resize, move, hide, add and delete columns
- Easy selection of analog or logic graphs when adding integer or real logic traces
- Possibility to jump to or highlight transitions for logic signals filtered by sensitivity (0→1 , 1→0...)

Top-Notch Performances

- Instantaneous display of waveform files with auto-adaptive display accuracy depending on the zoom factor
- Background generation of display files during waveform file loading



Advanced Features

- Use of vertical cursors to perform measurements and computations between signals relative to a reference cursor
- Possibility to zoom on a specific part of a signal waveform while visualizing the waveform globally thanks to the column splitting
- Capability to apply PSL assertions by post-processing logic waveforms from any simulator

 SMASH is available identically under Linux and Windows

dolphin-integration.com/eda
solutions@dolphin.fr

