

ON THE ROAD TOWARDS SLASH

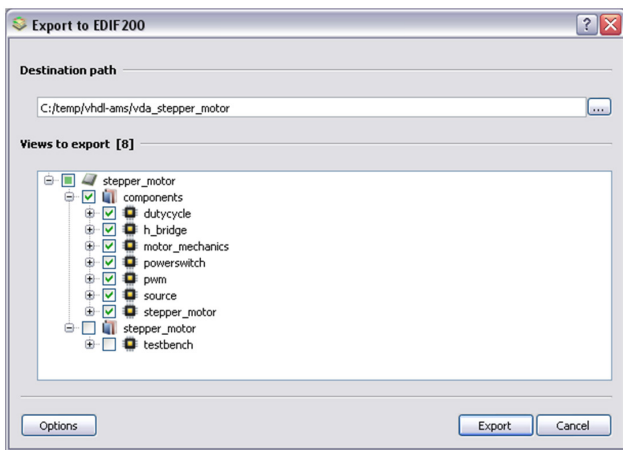
SLED 2.6 notably delivers an enhanced and user friendly device library for fast edition of mixed-signal and multi-language designs as well as improved EDIF interoperability.

SLASH, merging SLED with SMASH, will provide an integrated user experience with a unified SLASH user interface for schematic driven simulation.

EDIF EXPORT

The EDIF (Electronic Design Interchange Format) format is a standard for exchanging netlists and schematics between tools from different vendors.

For increased interoperability, SLED 2.6 implements the ability to export views of projects, libraries and cells to a single EDIF 200 file.



EDIF Export Dialog

The EDIF export of symbol views has been specifically improved when the export targets the Cadence Virtuoso Schematic Editor.

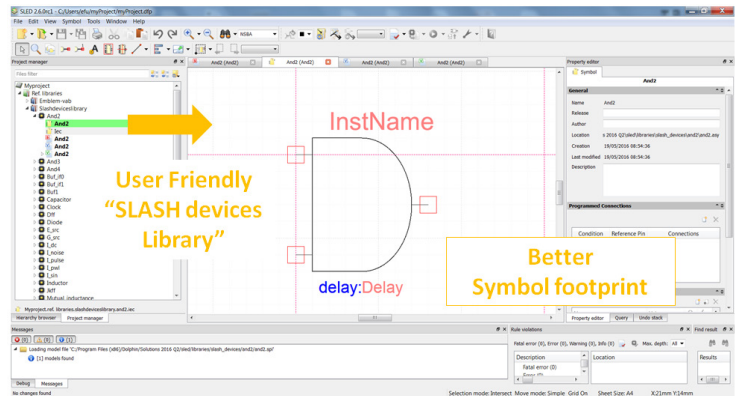
When importing the contents of an EDIF file, libraries, schematic and symbol views will be imported into the currently loaded design. With the discard symbol pin and Cadence Virtuoso options, importing Cadence schematics is straightforward.

YOUR FEEDBACK MATTERS

The flexibility of SLED for multi-language netlisting enables the design of true mixed-signal circuits as well as multi-level and multi-physics systems. To contribute to enhancing the user experience, please provide feedback on your needs to support@dolphin-integration.com

SLASH DEVICES LIBRARY

In order to ease schematic edition and multi-language and mixed-signal netlisting, the SLED device library has been re-designed as the SLASH device library. Cell parameters and symbols are standardized and consistent between devices but also between simulation languages (Spice, Verilog, VHDL).



SLASH Devices Library

ERGONOMICS

Pursuing ergonomic and quality efforts, the following enhancements have been implemented:

- Higher stability of the graphic user interface for enhanced ease of use.
- Improved use of sheet and schematic editors (refresh, propagated pin corrections...)
- Ergonomic adjustments (url document, symbol in context edition)

API ENHANCEMENTS

Following closely our customer needs for scripting capabilities, the following functions have been added to the API:

- Capability to display or not the pin name
- Providing a function for exporting the contents of a design