

### FOR INCREASED EFFICIENCY

Continuing the improvements for interoperability and schematic editing efficiency, SLED 2.5 provides two main features:

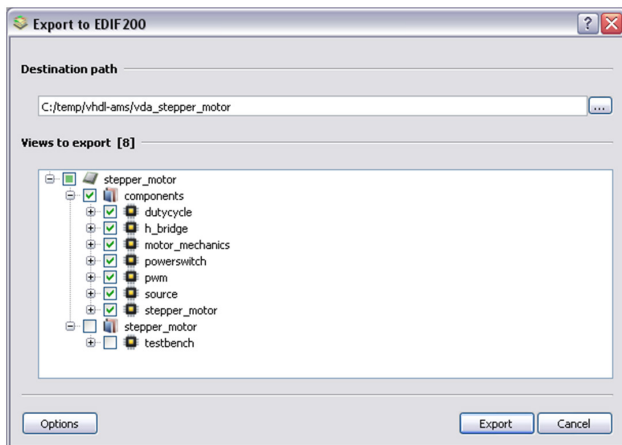
- EDIF export of schematics to Cadence Virtuoso, complementing already available EDIF import,
- Reduced internal changes in SLED project files when performing multiple saves for better cohabitation with versioning tools.

These features improve the interoperability of SLED with standard practices and tools. SLED 2.5 also delivers ergonomics and ease of use enhancements to constantly improve the overall user experience and productivity.

### EDIF EXPORT

The EDIF (Electronic Design Interchange Format) format is a standard for exchanging netlists and schematics between tools from different vendors.

For increased interoperability, SLED 2.5 implements the ability to export views of projects, libraries and cells to a single EDIF 200 file.



EDIF Export Dialog

The EDIF export of symbol views has been specifically improved when the export targets the Cadence Virtuoso Schematic Editor.

When importing EDIF, libraries, schematic and symbol views defined in the EDIF file will be imported into the currently loaded design. With the discard symbol pin and Cadence Virtuoso options, importing Cadence schematics is very easy.

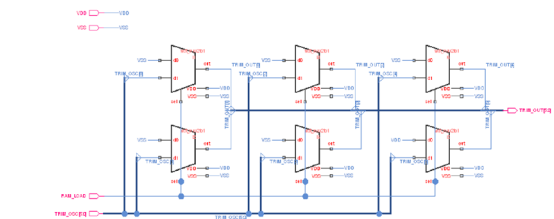
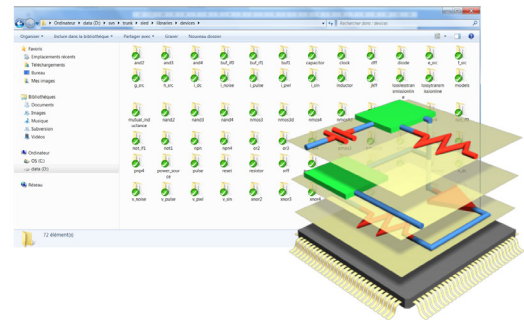
#### YOUR FEEDBACK MATTERS

The flexibility of SLED for multi-language netlisting enables the design of true mixed-signal circuits as well as multi-level and multi-physics systems. To contribute to enhancing the user experience, please provide feedback on your needs to [contact@dolphin-ip.com](mailto:contact@dolphin-ip.com)

### VERSIONING TOOLS COMPATIBILITY

For an improved cohabitation with versioning tools such as Subversion or CVS, SLED 2.5 provides easier versioning of:

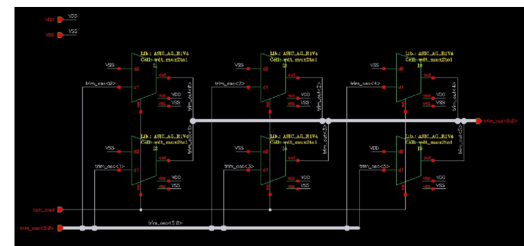
- Cell view files after saving a schematic/symbol,
- Hierarchical configuration files when netlisting.



Import EDIF 200



Export EDIF 200



EDIF Import / Export illustration

### API ENHANCEMENTS

Listening closely to our customer needs, two functions have been added to the API:

- Deleting a cell view from the file system,
- Iterating on the generated files during netlisting.