



Missing EDA Links

SLED 1.9

Improved Model Management

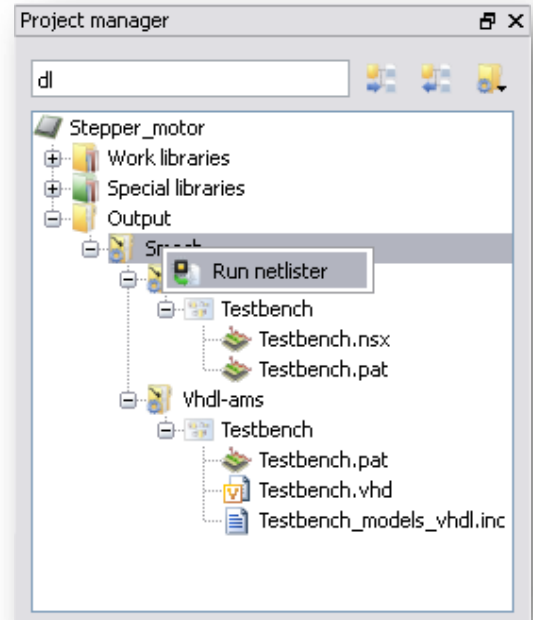
DOLPHIN INTEGRATION

Each new release of the schematic editor SLED focuses on improving the user experience for efficiently creating mixed-signal, multi-level and multi-language hierarchical schematics which can also be used in project reports or for communication purposes with customers.

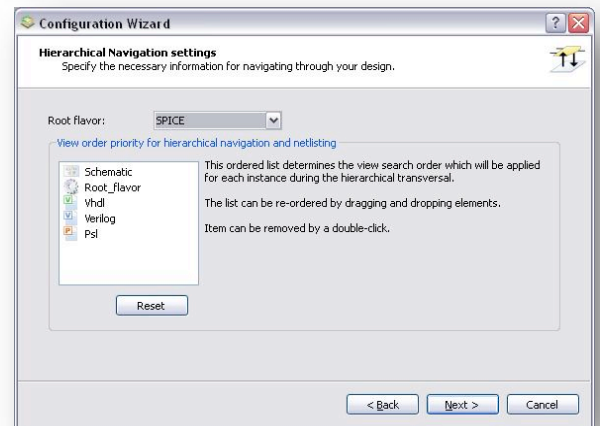
Key Features of SLED 1.9

- ✓ Easy access, display and handling of any kind of documentation (including model datasheets) in the Project Manager
 - Capability to add online documentation (with integrated browser) as well as documentation files (html, word, pdf...) to designs, libraries, and cells
- ✓ Better quality when printing schematics in black and white
- ✓ Accelerated loading and display of projects
- ✓ Easy swapping of symbols and cells from the property editor
- ✓ Possibility to run an external process (e.g. script for netlist parsing) after netlisting
- ✓ Improved Design Context configuration
 - Setup using user-friendly configuration wizard
 - Local configuration of power supplies
- ✓ Quick access to generated circuit netlist files through the Project Manager

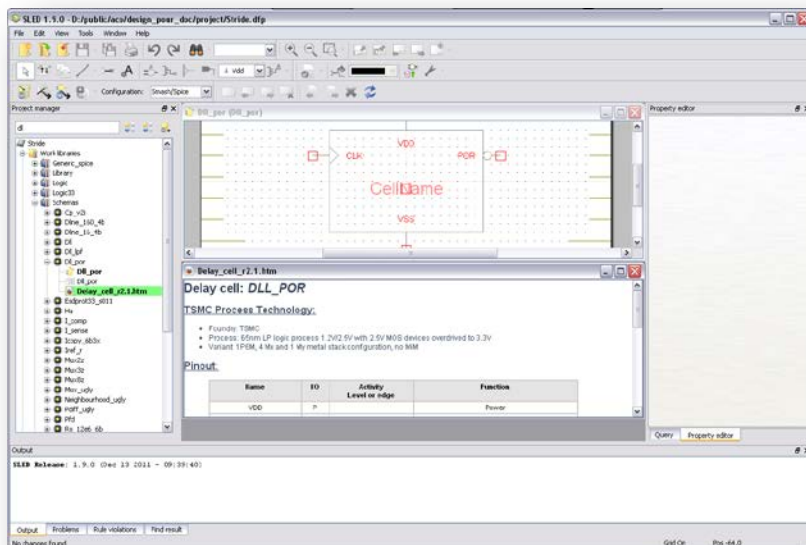
Generated circuit netlist files



Design context configuration wizard



Model Management



One of the major improvements of SLED 1.9 is the capability to manage model documentation in the project manager and to display supported documentation formats directly in the environment. It is now more convenient to share documentations through design libraries within project teams.

SLED is available identically under Linux and Windows.

