

Missing EDA Links

SLED 1.11

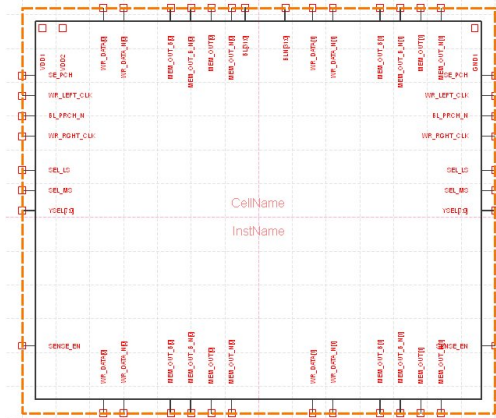
DOLPHIN INTEGRATION

Improved Ergonomics for Schematic Design

SLED 1.11 provides ergonomics and ease of use enhancements to constantly improve the overall user experience. Additionally, important progress has been made on the robustness of SLED with advanced techniques to automatically validate the user interface.

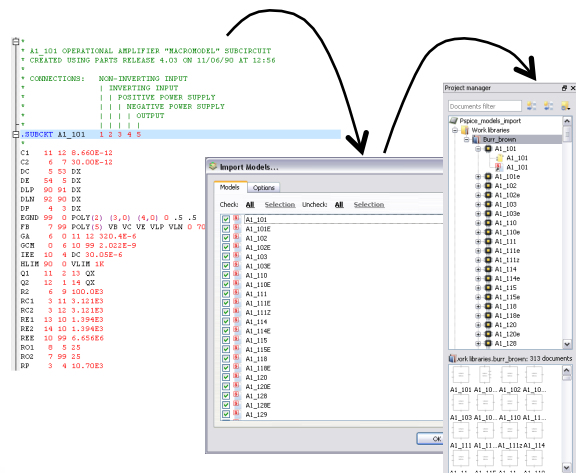
Key Enhancements of SLED 1.11

- ✓ Automatic generation of libraries (including generic symbols) from PSPICE flavor models
- ✓ Automatic creation of custom boundaries, via scripts, for abutment based assembly of schematics
 - Capability to manually modify the automatically generated custom boundaries
- ✓ Enhanced “Devices Library” with symbols for logic sources
- ✓ Improved the display of ports along with the position of their associated net names
- ✓ Capability to navigate through the hierarchy by double-clicking on instances or empty areas
- ✓ Possibility to rename a cell and update all schematics with instances of this cell in the project



Custom boundary of the symbol

SLED 1.11 enables importing SPICE model libraries and automatically creating symbols for direct use in the editor. This feature can be applied to a single cell or to a complete library of models.

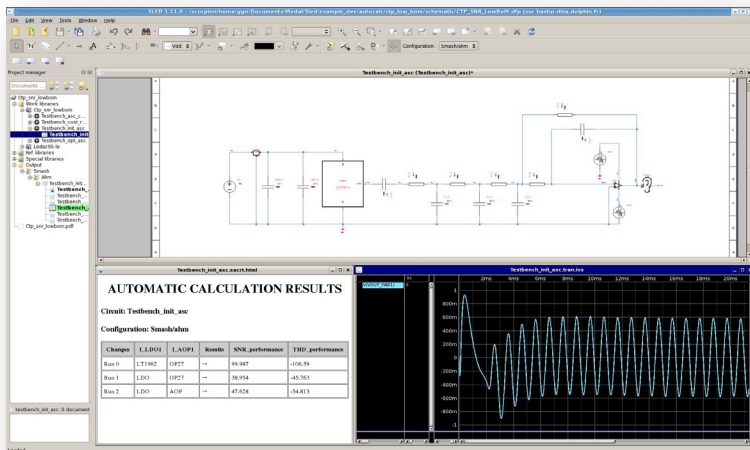


Volunteer now to be one of the first to try the next release of SLED for automatic calculation:

- ✓ Automatically update simulation results after parameter modifications in SLED
- ✓ Display waveforms directly in SLED

With SLASH, interactively find the best set of parameters to meet your design goals

Do not wait any longer and contact Nathalie Dufayard at solutions@dolphin.fr



 **SLED is available identically under Linux and Windows**

dolphin-integration.com/eda
solutions@dolphin.fr

